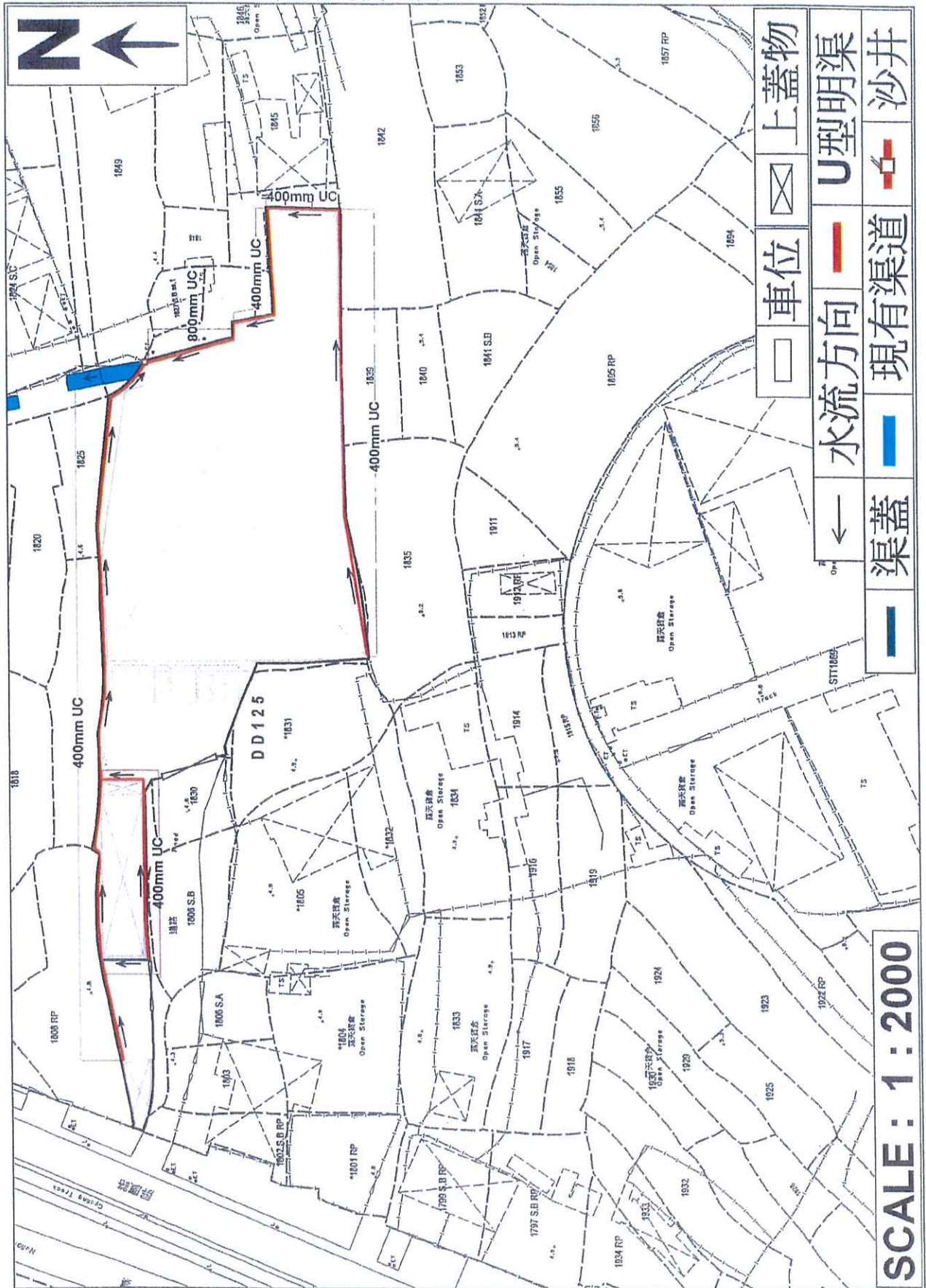


APPENDIX 6

**The Approved Drainage Proposal and the Relevant
Compliance Letter for Submission of a Condition Record of
Existing Drainage Facilities
under Previous Planning Application No. A/HSK/356**

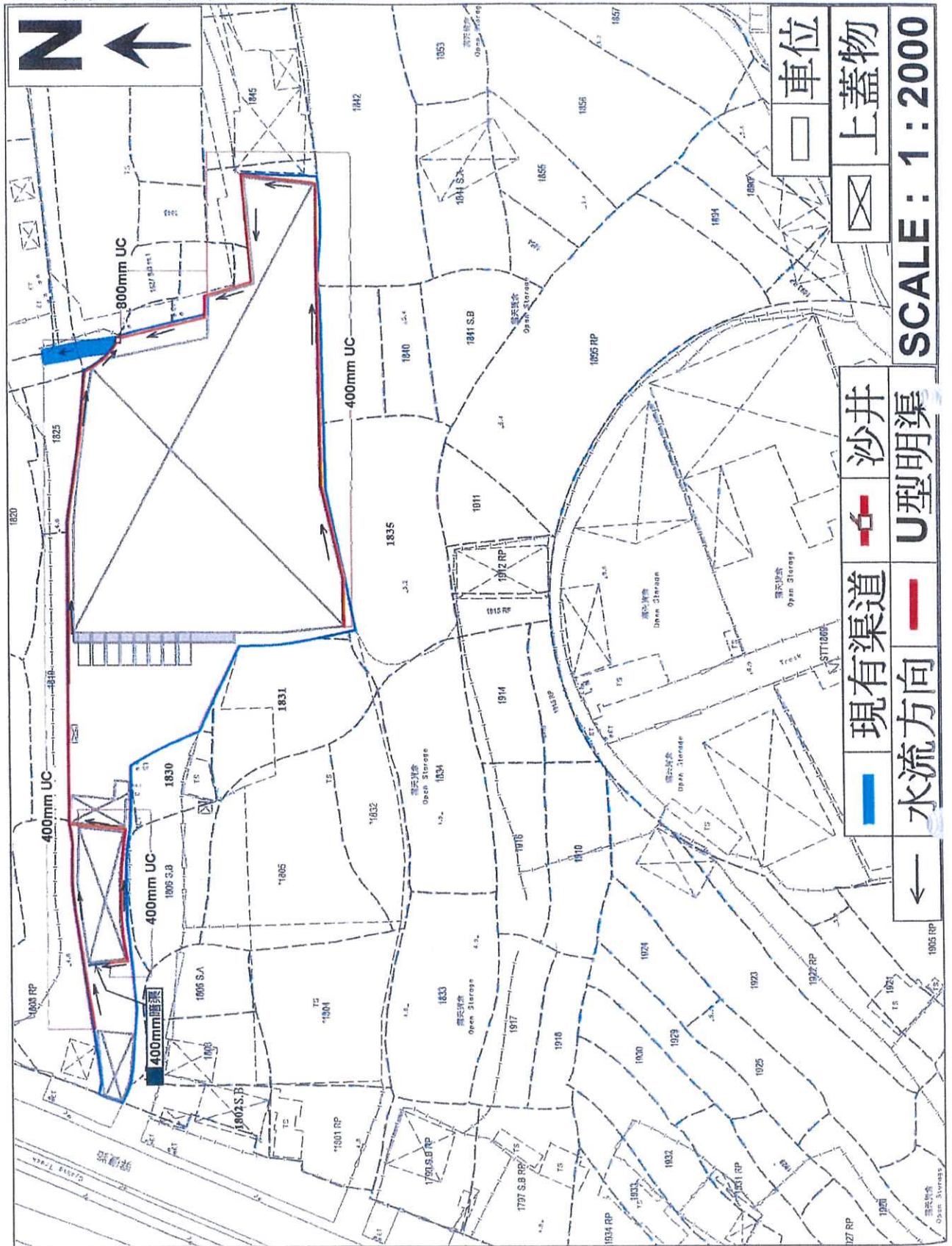
附頁 1：前申請的渠務建議計劃圖



SCALE: 1:2000

	渠蓋
	水流方向
	現有渠道
	渠位
	U型明渠
	上蓋物

附頁 2：渠務建議計劃圖

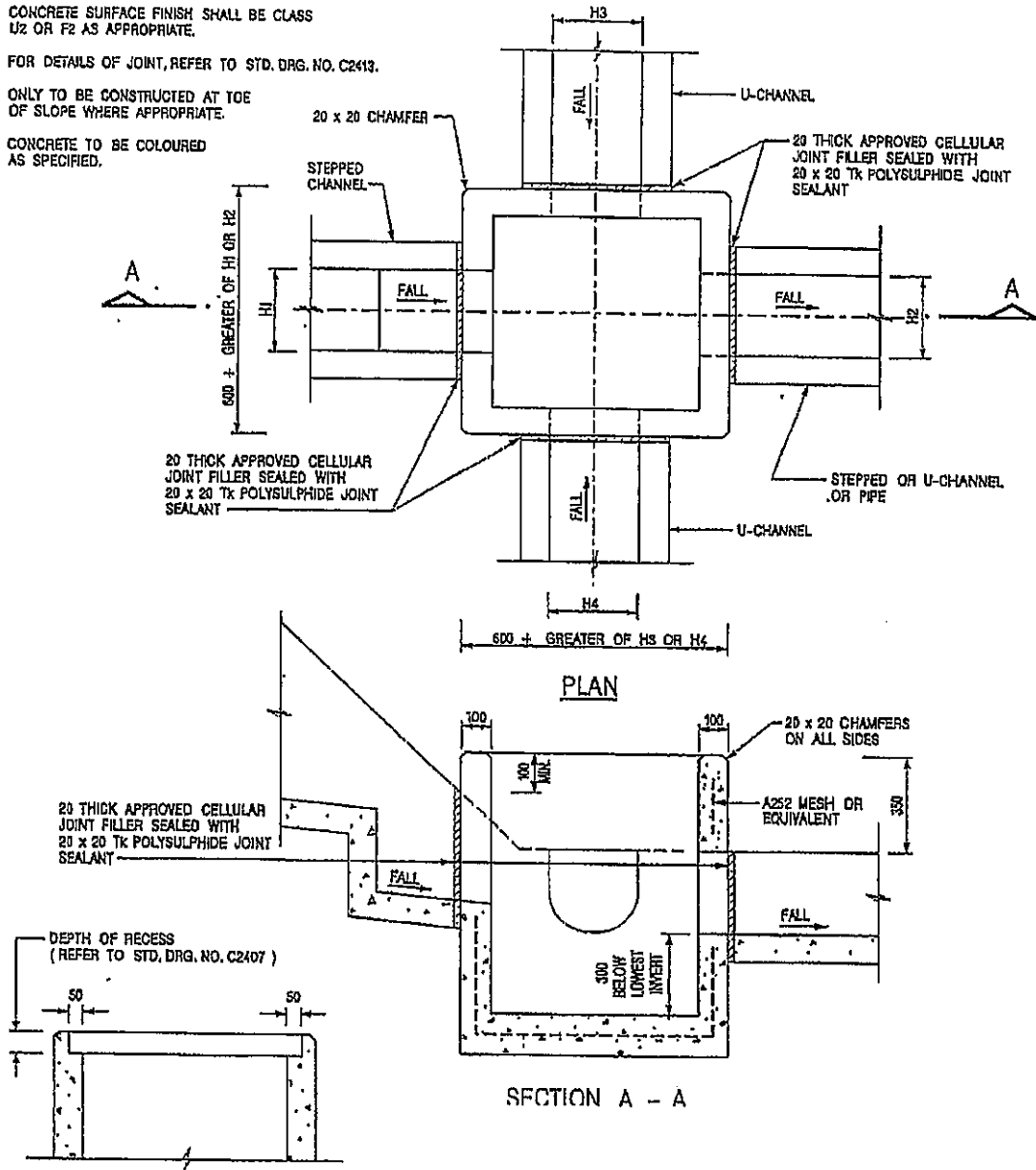


	水流方向		現有渠道		沙井		上蓋物		車位
SCALE: 1:2000									

附頁 3：沙井建造模式

NOTES:

1. ALL DIMENSIONS ARE IN MILLIMETRES.
2. ALL CONCRETE SHALL BE GRADE 20 / 20.
3. CONCRETE SURFACE FINISH SHALL BE CLASS U2 OR F2 AS APPROPRIATE.
4. FOR DETAILS OF JOINT, REFER TO STD. DRG. NO. C2413.
5. ONLY TO BE CONSTRUCTED AT TOE OF SLOPE WHERE APPROPRIATE.
6. CONCRETE TO BE COLOURED AS SPECIFIED.



DETAILS OF DESILTING CATCHPIT

規 劃 署

屯門及元朗西規劃處
香港新界沙田上禾輦路1號
沙田政府合署14樓



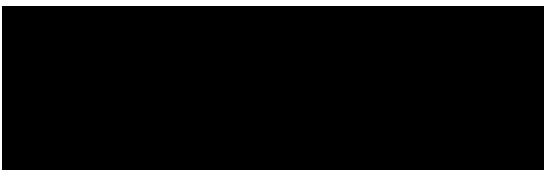
By Fax [redacted] & Post

Planning Department

Tuen Mun and Yuen Long West
District Planning Office
14/F, Sha Tin Government Offices,
1 Sheung Wo Che Road, Sha Tin,
N.T. Hong Kong

12 January 2023

來函檔號 Your Reference
本署檔號 Our Reference () in TPB/A/HSK/356
電話號碼 Tel. No.: 2158 6295
傳真機號碼 Fax No.: 2489 9711



Dear Sir/Madam,

Compliance with Approval Condition (b).
Planning Application No. A/HSK/356

I refer to your submission dated 7.11.2022 regarding the submission of a condition record of the existing drainage facilities on the site for compliance with captioned approval condition. The relevant department has been consulted on your submission. Your submission is considered:

- Acceptable. The captioned condition has been complied with. Detailed departmental comment is at **Appendix I**.
- Acceptable. Since the captioned condition requires both the submission and implementation of the proposal, it has not been fully complied with. Please proceed to implement the accepted proposal for full compliance with the approval condition.
- Not acceptable. The captioned condition has not been complied with.

Should you have any queries on the above, please contact Ms. Vicky SY (Tel: 2300 1347) of the Drainage Services Department direct.

Yours faithfully,

(Ms. Sherry KONG)
for District Planning Officer/
Tuen Mun and Yuen Long West
Planning Department

c.c. CE/MN, DSD (Attn: Ms. Vicky SY)
Internal CTP/TPB2



Appendix I

A/HSK/356 – Compliance with Approval Condition (b)

Comment from the Drainage Services Department:

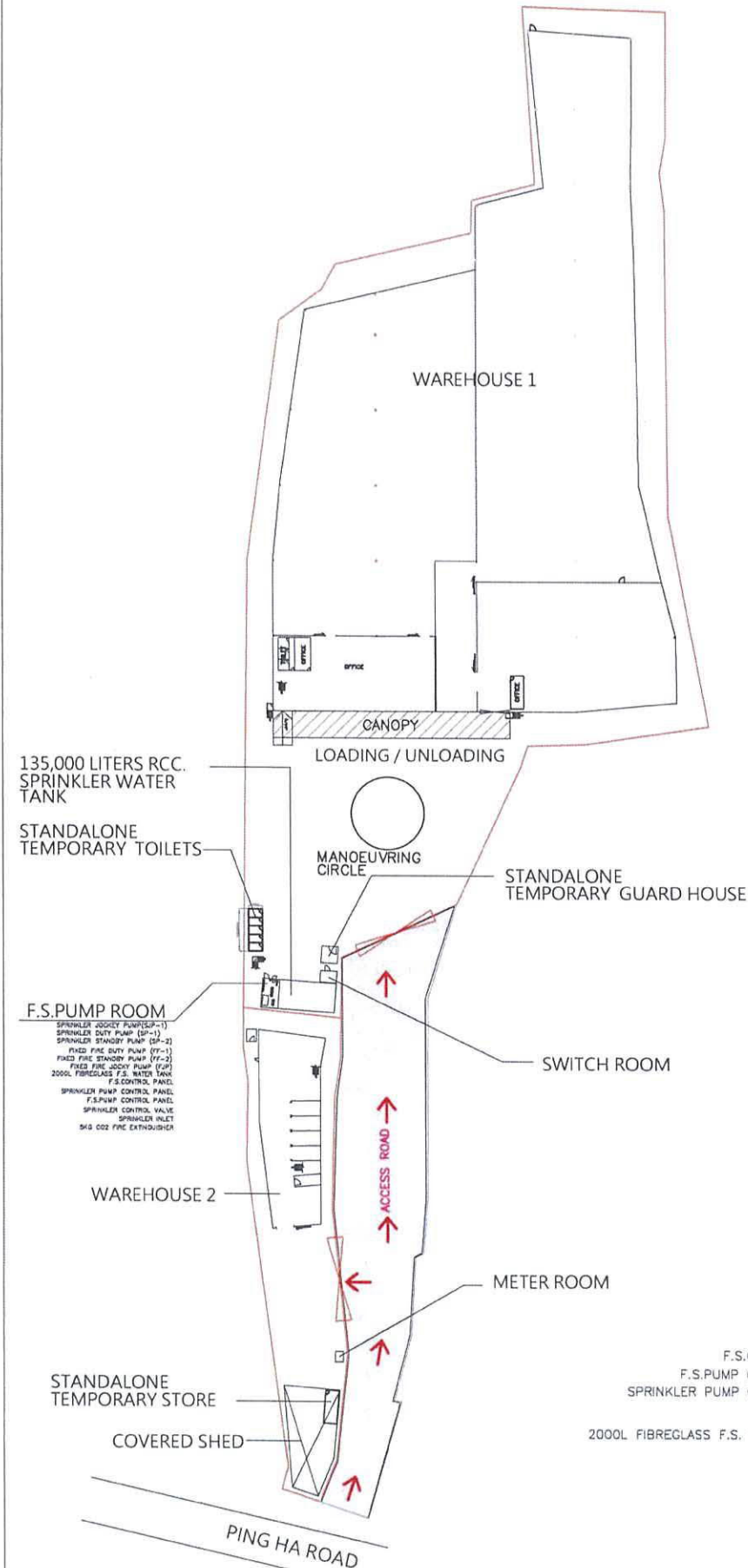
- (i) The applicant is reminded to clear the sump pit at a regular interval.

APPENDIX 6

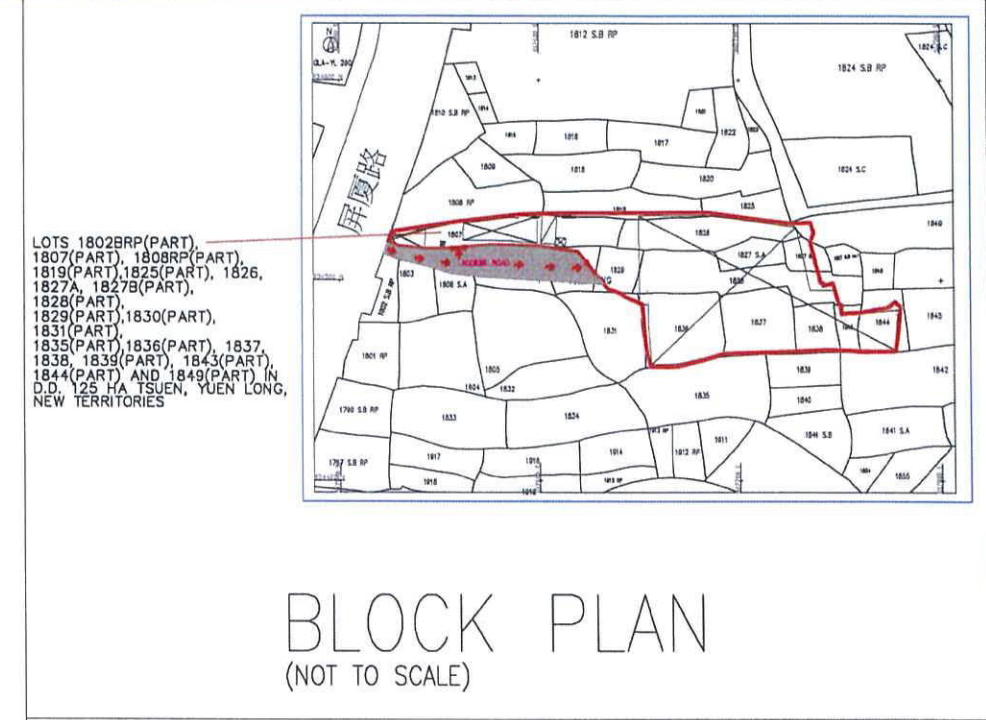
**The Accepted Fire Service Installations Proposal under
Previous Planning Application No. A/HSK/105**

FIRE SERVICE NOTES :

1. A MODIFIED HOSE REEL SYSTEM WITH A 2,000 L F.S. TANK SHALL BE PROVIDED TO THE SUBJECT BUILDINGS IN ACCORDANCE WITH PARA 5.14 OF THE CODE OF PRACTICE FOR MINIMUM FIRE SERVICE INSTALLATIONS AND EQUIPMENT 2012. HOSE REEL SHALL BE PROVIDED TO ENSURE THAT EVERY PART OF THE BUILDINGS WHERE CAN BE REACHED BY A LENGTH OF NOT MORE THAN 30M OF HOSE REEL TUBING.
 - 1.1 HOSE REEL SHALL BE PROVIDED AT POSITIONS AS INDICATED ON PLANS.
 - 1.2 NO FIRE SERVICE INLET TO BE PROVIDED FOR MODIFIED HOSE REEL SYSTEM.
 - 1.3 TWO FIXED FIRE PUMPS (DUTY/STANDBY) TO BE PROVIDED.
2. FIRE ALARM SYSTEM SHALL BE PROVIDED IN ACCORDANCE WITH BS 5839-1 : 2002 + A2 : 2008 AND FSD CIRCULAR LETTERS NO. 1/2009 & 3/2010 & 2/2012. ONE ACTUATING POINT AND ONE AUDIO WARNING DEVICE TO BE LOCATED AT EACH HOSE REEL POINT. VISUAL ALARM SIGNALS TO BE PROVIDED. ACTUATING POINT SHALL INCLUDE FACILITIES FOR FIRE PUMP START AND AUDIO/VISUAL WARNING DEVICE INITIATION.
 - 2.1 FIRE ALARM PANEL TO BE PROVIDED AND LOCATED INSIDE F.S. PUMP ROOM.
3. SUFFICIENT EMERGENCY LIGHTING WITH 2 HOURS BACK UP BATTERY TO BE PROVIDED TO THE BUILDINGS IN ACCORDANCE WITH BS 5266 : PART 1 AND BS EN 1838.
4. SUFFICIENT EXIT SIGN / DIRECTIONAL SIGN TO BE PROVIDED IN ACCORDANCE WITH BS 5266 : PART 1 AND FSD CIRCULAR LETTER NO. 5/2008.
5. FIRE EXTINGUISHERS SHALL BE PROVIDED AS INDICATED ON PLANS.
6. WHEN A VENTILATION/AIR CONDITIONING CONTROL SYSTEM TO THE AREAS/BUILDING IS REQUIRED TO BE PROVIDED, IT SHALL STOP MECHANICALLY INDUCED AIR MOVEMENT WITHIN A DESIGNATED FIRE COMPARTMENT.
7. AUTOMATIC SPRINKLER SYSTEM SHALL BE PROVIDED TO THE ENTIRE BUILDING/STRUCTURE IN ACCORDANCE WITH LPC RULES INCORPORATING BS EN 12845 : 2015 AND FSD CIRCULAR LETTER 5/2020 EXCEPT E&M PLANT ROOMS. SPRINKLER SHALL NOT BE PROVIDED TO STANDALONE TEMPORARY : TOILETS / OFFICES / STORES / GUARD HOUSE WHERE TOTAL FLOOR AREAS LESS THAN 230 SQUARE METRES. SPRINKLER SHALL NOT BE PROVIDED TO AREAS OF COVERED SHED AS THOSE ARE METAL STRUCTURE WITH 2 SIDES OPENING.
 - 7.1 HAZARD CLASSIFICATION : OH3
 - 7.2 STORED PRODUCTS AND CATEGORIES : CATEGORY (1)
 - 7.3 STORAGE CONFIGURATION : FREE STANDING (ST1) & POST-PALLET STORAGE (ST2)
 - 7.4 STORAGE HEIGHT NOT EXCEEDING : 4M & 3.5M
 - 7.5 STORAGE SHOULD BE CONFINED TO BLOCKS NOT EXCEEDING 50 SQ M IN PLAN AREA FOR CATEGORY I.
 - 7.6 STORAGE BLOCKS SHOULD BE SEPARATED BY AISLES NO LESS THAN 2.4M WIDE
 - 7.7 ONE NUMBER 135,000 LITRES SPRINKLER WATER TANK TO BE PROVIDED AS INDICATED ON PLANS.
 - 7.8 SPRINKLER PUMPS, SPRINKLER CONTROL VALVES AND SPRINKLER INLETS SHALL BE PROVIDED AS INDICATED ON PLANS.
8. SECONDARY SOURCE OF POWER SUPPLY FOR FIRE SERVICE INSTALLATIONS TO BE PROVIDED BY CONNECTION BEFORE THE MAIN SWITCH WITH AUTOMATIC CHANGE-OVER DEVICE AND SATISFACTION OF THE DIRECTOR OF FIRE SERVICES
9. SMOKE EXTRACTION SYSTEM SHALL NOT BE PROVIDED WHEREAS THE AGGREGATE AREA OF OPENABLE WINDOWS OF THE COMPARTMENT EXCEEDS 6.25% OF THE FLOOR AREA OF THAT COMPARTMENT IN WAREHOUSES.



SITE LOCATION PLAN
(SCALE 1 : 400)



LEGEND

- COVERED SHED
- METAL GATE
- FIRE ALARM BELL
- VISUAL FIRE ALARM
- MANUAL FIRE ALARM CALL POINT (BREAK GLASS TYPE)
- EXIT SIGN
- SLIDING DOOR
- HOSE REEL SET
- FIXED FIRE PUMP/SPRINKLER PUMP
- SPRINKLER CONTROL VALVE
- SPRINKLER INLET
- 9L W/ CO2 FIRE EXTINGUISHER
- SAND BUCKET
- 5KG CO2 FIRE EXTINGUISHER
- F.S. CONTROL PANEL
- SPRINKLER / F.S. PUMP CONTROL PANEL

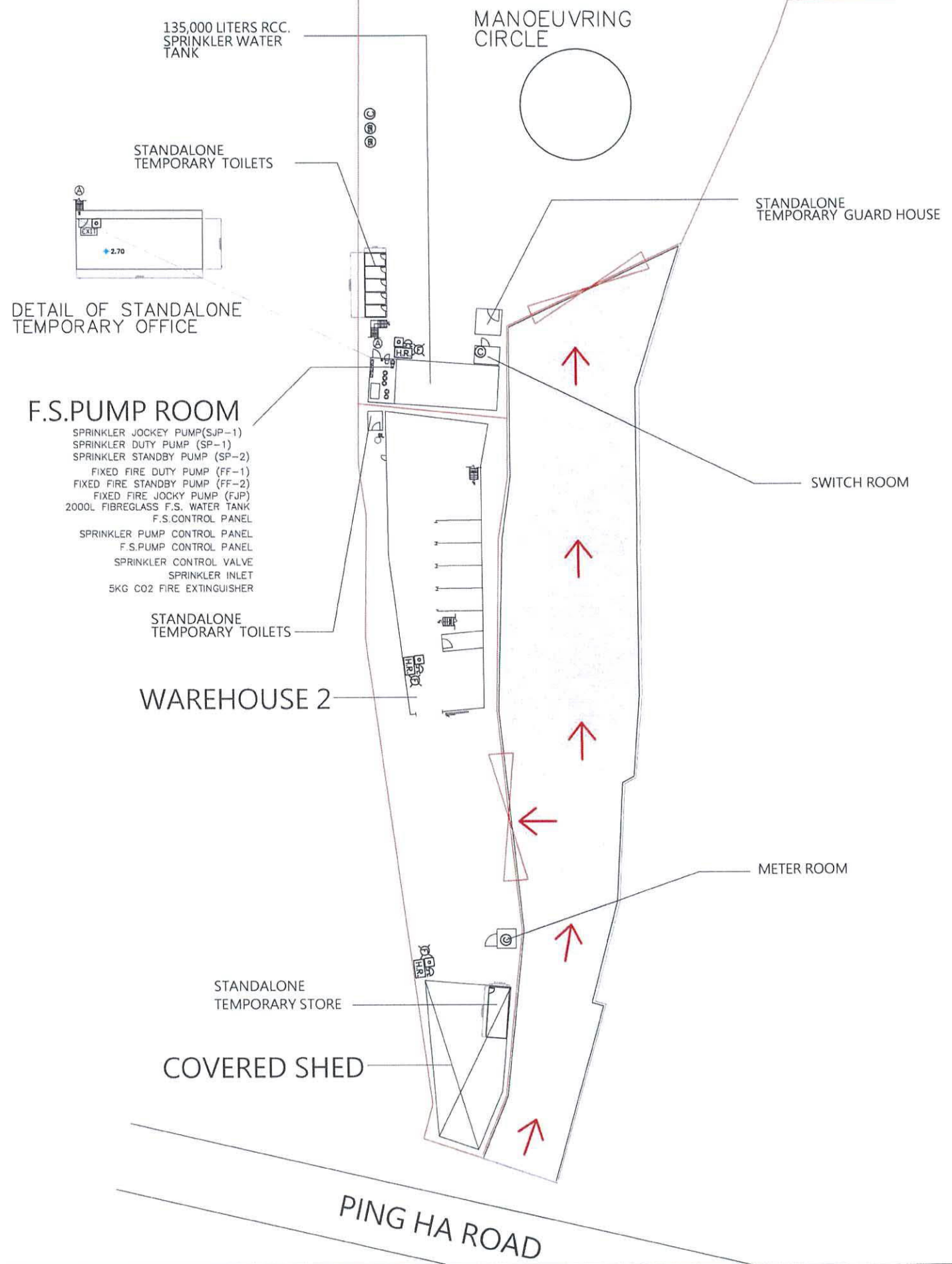
FOR PlanD SUBMISSION

FSI CONSULTANT:



PROJECT:
 LOTS 1802BRP(PART), 1807(PART), 1808RP(PART), 1819(PART), 1825(PART), 1826, 1827A, 1827B(PART), 1828(PART), 1829(PART), 1830(PART), 1831(PART), 1835(PART), 1836(PART), 1837, 1838, 1839(PART), 1843(PART), 1844(PART) AND 1849(PART) IN D.D. 125 HA TSUEN, YUEN LONG, NEW TERRITORIES

TITLE:
 FS NOTES, LEGEND, DETAIL OF F.S. PUMP ROOM, DETAIL OF STANDALONE TEMPORARY OFFICE, BLOCK PLAN AND SITE LOCATION PLAN (RNTPC PAPER NO.A/HSK/356)

SCALE: 1:400 @A0		DRAWN BY: BARRY	
DATE: 9-03-2022		DESIGNED BY: BARRY	
DWG. NO.: FS/01		CHECKED BY: NG L.C.	
CONTRACT NO.:		SHEET: 4	
REVISION:			



FOR PlanD SUBMISSION

FSI CONSULTANT:



PROJECT:
 LOTS 1802BRP(PART), 1807(PART), 1808BRP(PART), 1819(PART), 1825(PART), 1826, 1827A, 1827B(PART), 1828(PART), 1829(PART), 1830(PART), 1831(PART), 1835(PART), 1836(PART), 1837, 1838, 1839(PART), 1843(PART), 1844(PART) AND 1849(PART) IN D.D. 125 HA TSUEN, YUEN LONG, NEW TERRITORIES

TITLE:
 PART PLAN
 (RNTPC PAPER NO.A/HSK/356)

SCALE: 1:200 @A0
 DRAWN BY: BARRY

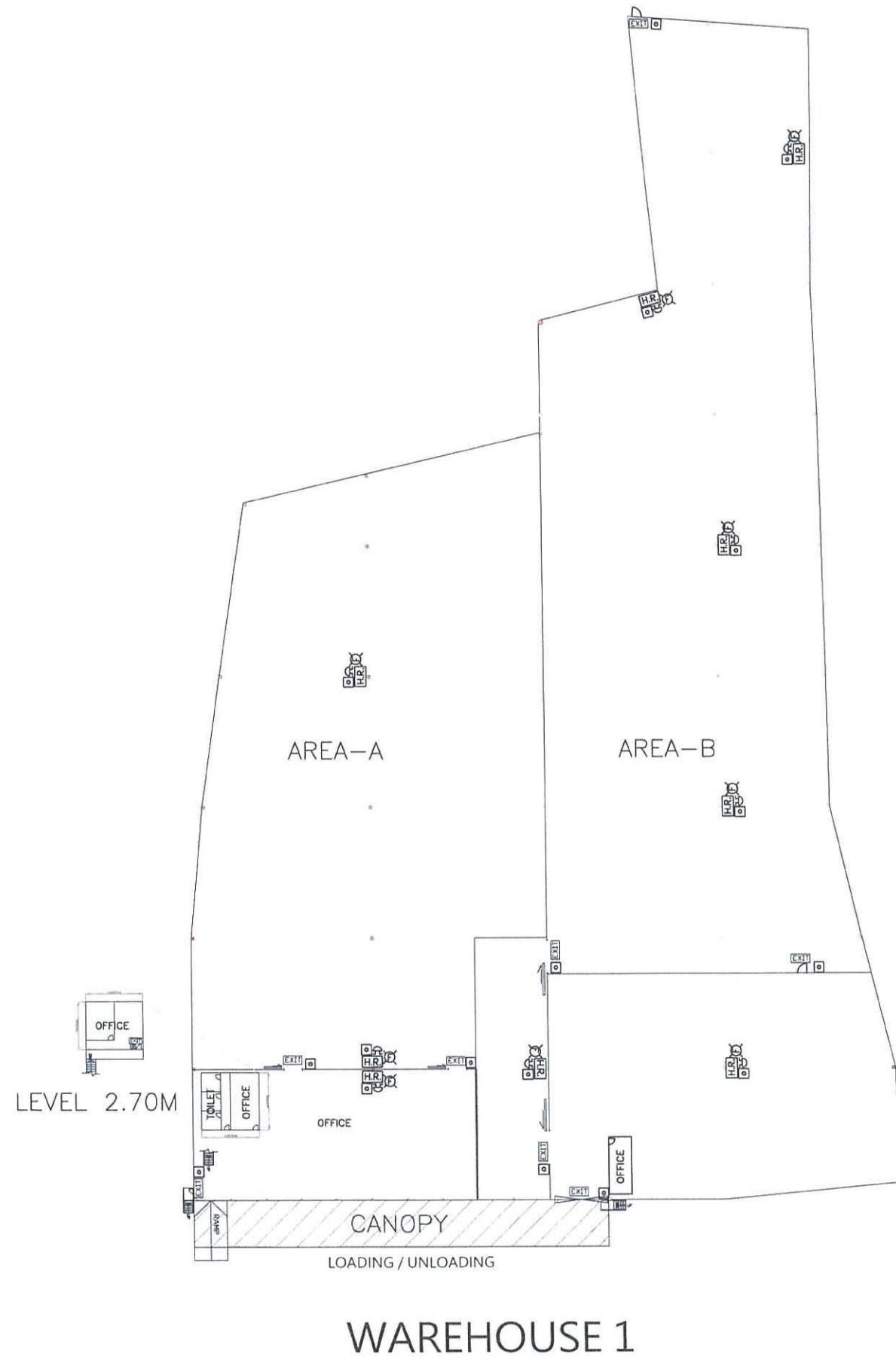
DATE: 9-03-2022
 DESIGNED BY: BARRY

DWG. NO: FS/02
 CHECKED BY: NG L.C.

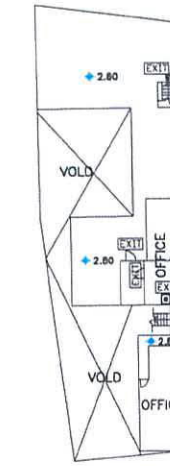
CONTRACT NO.:
 SHEET: 4

REVISION:

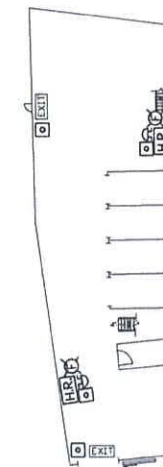
--	--	--	--	--	--



WAREHOUSE 1



COCKLOFT

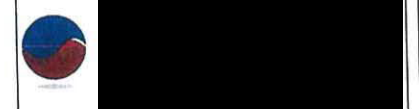


GROUND FLOOR

WAREHOUSE 2

FOR PlanD SUBMISSION

FSI CONSULTANT:



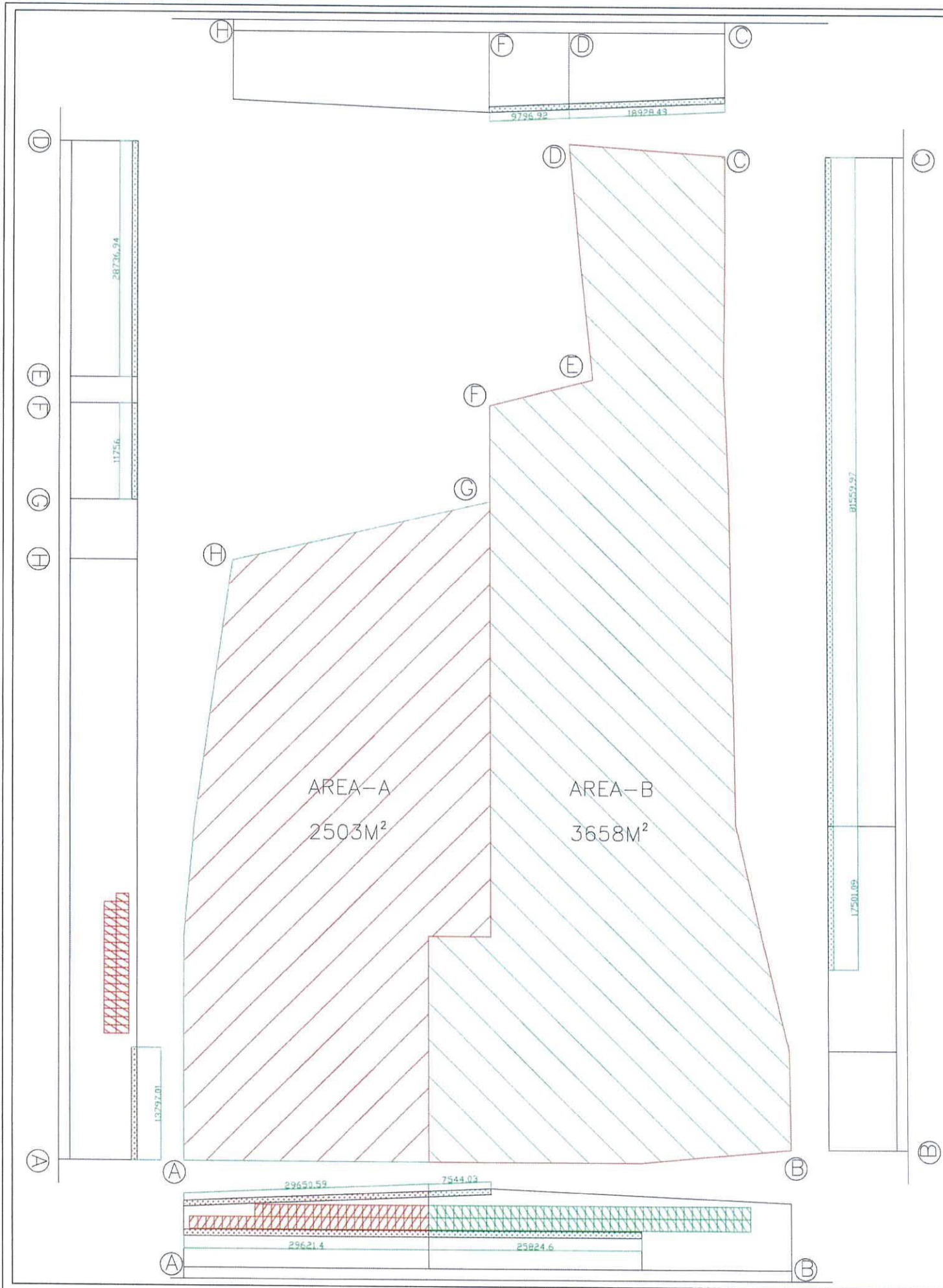
PROJECT:

LOTS 1802BRP(PART), 1807(PART), 1808RP(PART), 1819(PART), 1825(PART), 1826, 1827A, 1827B(PART), 1828(PART), 1829(PART), 1830(PART), 1831(PART), 1835(PART), 1836(PART), 1837, 1838, 1839(PART), 1843(PART), 1844(PART) AND 1849(PART) IN D.D. 125 HA TSUEN, YUEN LONG, NEW TERRITORIES

TITLE:

WAREHOUSE 1 AND WAREHOUSE 2 FIRE SERVICES LAYOUT PLAN (RNTPC PAPER NO.A/HSK/356)

SCALE: 1:200 @AO	DRAWN BY: BARRY
DATE: 9-03-2022	DESIGNED BY: BARRY
DWG. NO: FS/03	CHECKED BY: NG L.C.
CONTRACT NO.:	SHEET: 4
REVISION:	



WAREHOUSE 1

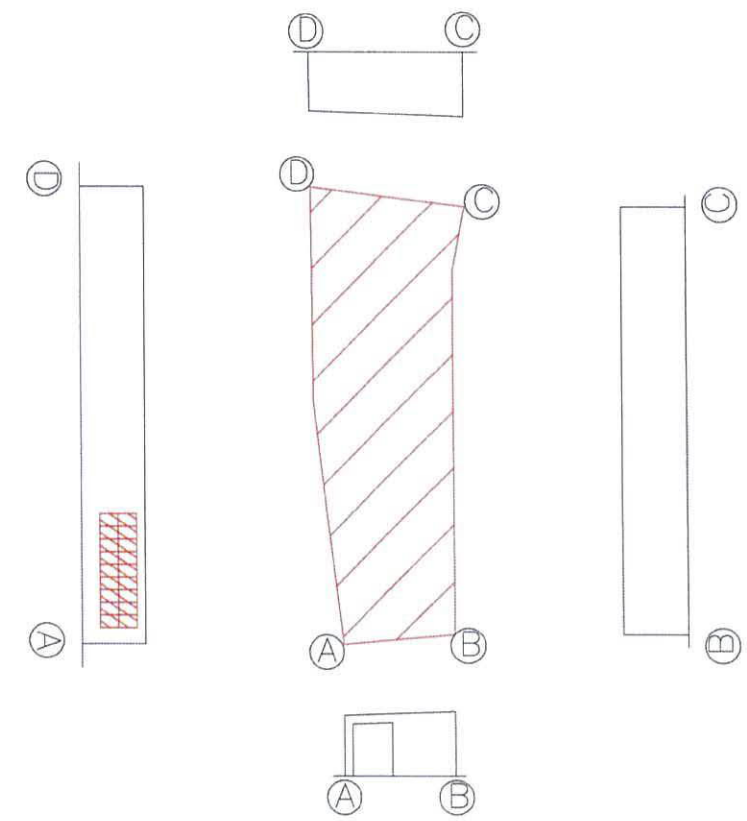
WAREHOUSE 1

FLOOR AREA	REQUIRED OPENABLE WINDOWS	OPENABLE WINDOWS	VENTILATION OPENING	PROVIDED OPENABLE WINDOWS
AREA-A 2503 M ²	2503 M ² X 6.25% = 156.5 M ²	1 M X 1.5 M = 1.5 M ² X 83 Nos. = 124.5 M ²	0.7 M X 73.069 M = 51.14 M ²	175.64 M ²
AREA-B 3658 M ²	3658 M ² X 6.25% = 228.6 M ²	1 M X 1.5 M = 1.5 M ² X 78 Nos. = 117 M ²	0.7 M X 201.6 M = 141.12 M ²	258.12 M ²
TOTAL :	6161 M² X 6.25% = 385.1 M²			433.76 M²

WAREHOUSE 2


WAREHOUSE 2

FLOOR AREA	REQUIRED OPENABLE WINDOWS	OPENABLE WINDOWS	PROVIDED OPENABLE WINDOWS
AREA 371.2 M ²	371.2 M ² X 6.25% = 23.2 M ²	1 M X 1.5 M = 1.5 M ² X 18 Nos. = 27 M ²	27 M ²



FOR PlanD SUBMISSION

FSI CONSULTANT:



PROJECT:
 LOTS 1802BRP(PART), 1807(PART), 1808BRP(PART), 1819(PART), 1825(PART), 1826, 1827A, 1827B(PART), 1828(PART), 1829(PART), 1830(PART), 1831(PART), 1835(PART), 1836(PART), 1837, 1838, 1839(PART), 1843(PART), 1844(PART) AND 1849(PART) IN D.D. 125 HA TSUEN, YUEN LONG, NEW TERRITORIES

TITLE:
 PROVISION OF OPENABLE WINDOW AREA WITH CALCULATION
 (RNTPC PAPER NO.A/HSK/356)

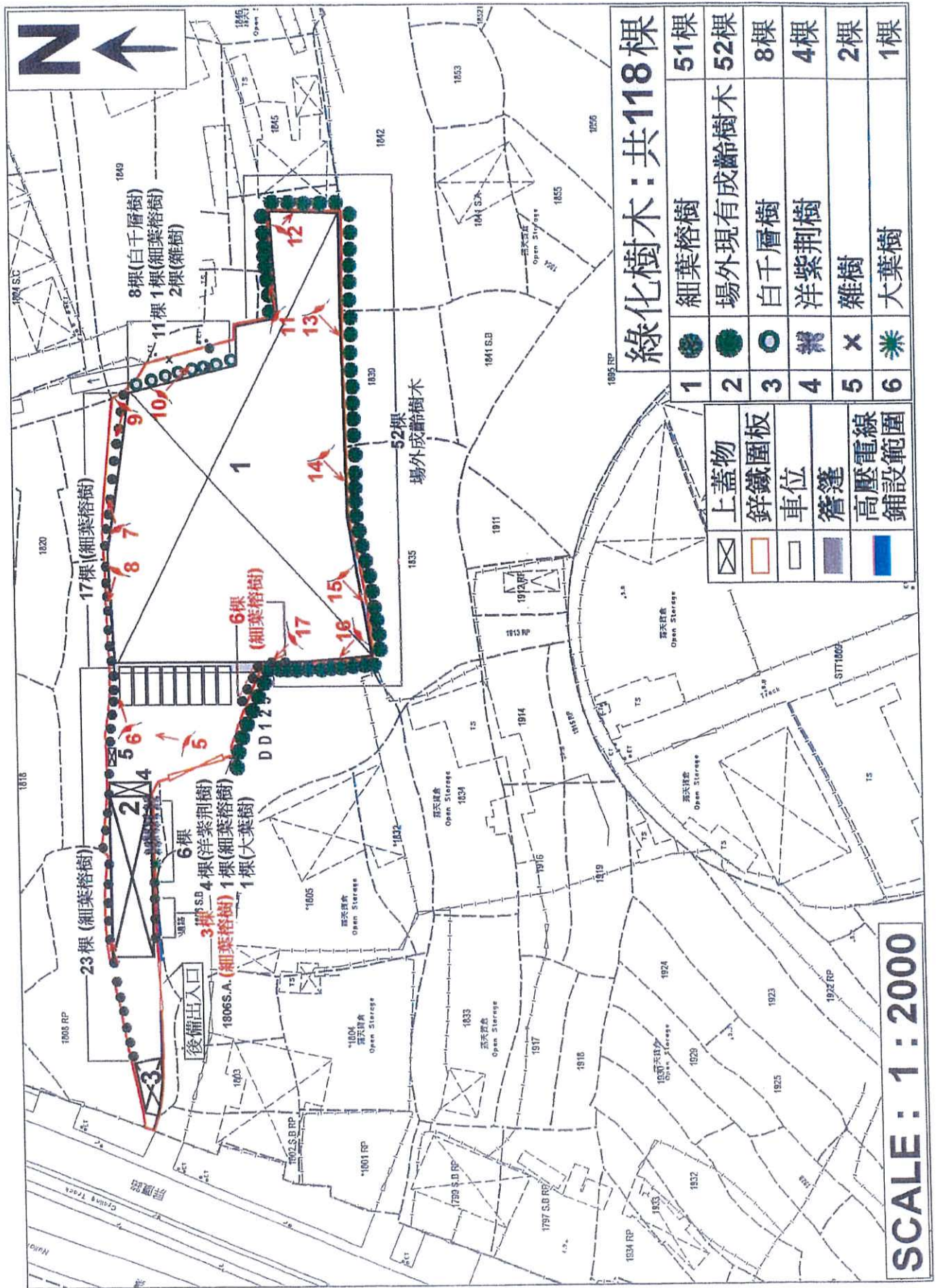
SCALE: 1:200 @AO	DRAWN BY: BARRY
DATE: 9-03-2022	DESIGNED BY: BARRY
DWG. NO: FS/04	CHECKED BY: NG L.C.
CONTRACT NO.:	SHEET: 4

REVISION:

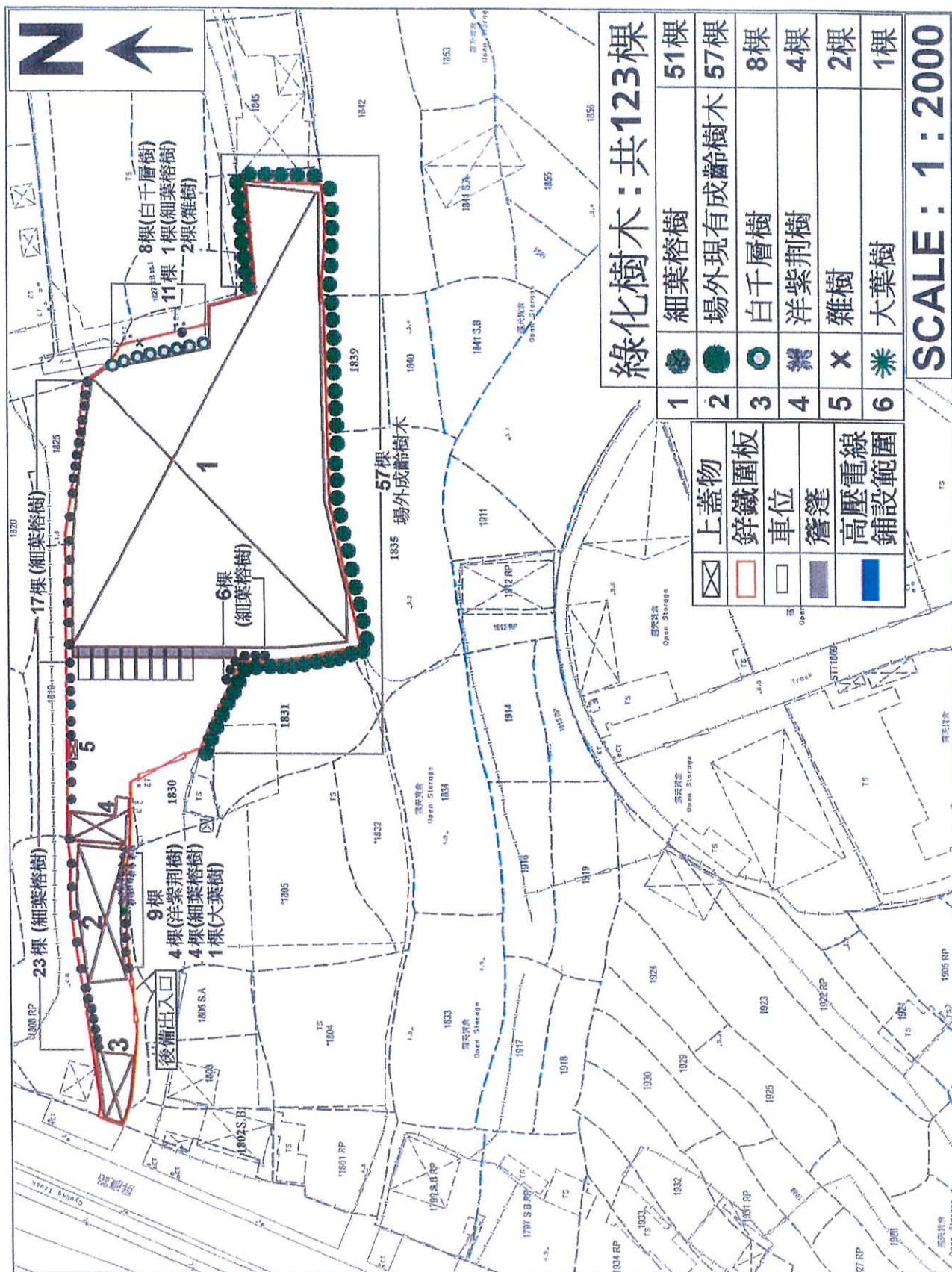
APPENDIX 8

**The Approved Tree Preservation and Landscape Proposal
and the Relevant Compliance Letter for Implementation of
the Accepted Tree Preservation and Landscape Proposal
under Previous Planning Application
No. A/YL-HT/961**

附頁 1：前申請的美化環境及保護樹木建議計劃圖



附頁 2：美化環境及保護樹木建議計劃圖



+ 852 2489 9711

傳真 ██████████ 及郵寄

規 劃 署

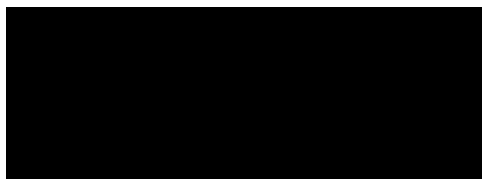


Planning Department

屯門及元朗西規劃處
香港新界沙田上禾輋路1號
沙田政府合署14樓

Tuen Mun and Yuen Long West
District Planning Office
14/F, Sha Tin Government Offices,
1 Sheung Wo Che Road, Sha Tin,
N.T. Hong Kong

來函檔號 Your Reference
本署檔號 Our Reference () in TPB/A/YL-HT/961
電話號碼 Tel. No.: 2158 6295
傳真機號碼 Fax No.: 2489 9711



先生/女士：

履行規劃許可附帶條件(I)項
規劃申請編號：A/YL-HT/961

本處於二零一六年三月三十日收到你落實美化環境及保護樹木的建議資料以履行上述規劃許可附帶條件。就你提交的資料，本處已諮詢有關部門，有關意見如下：

- 接受。因此，你已經履行上述附帶條件。
- 接受。由於上述附帶條件要求提交及落實建議，因此，你未有完全履行有關附帶條件。請你加快落實已批准的建議以完全履行有關附帶條件。
- 不接受。因此，上述附帶條件未能被視作已履行。有關部門的詳細意見請見附件 I。

如你對部門意見有疑問，請直接聯絡本署園境組葉先生(電話：2231 4844)

規劃署屯門及元朗西規劃專員
(趙崇栢 代行)



二零一六年七月十八日

副本送呈

總城市規劃師/城市設計及園境 (經辦人：葉天偉先生)

內部傳閱

總城市規劃師/城市規劃委員

我們的理想 - 「透過規劃工作,使香港成為世界知名的國際都市。」
Our Vision - "We plan to make Hong Kong an international city of world prominence."



Received Time 18 Jul. 11:40

APPENDIX 9

Site Photo

Site Photo

Application Site

